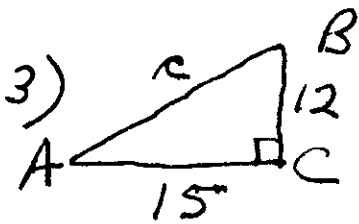
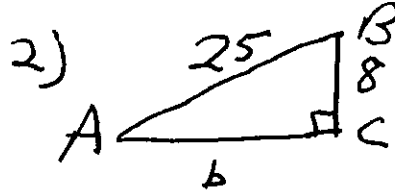
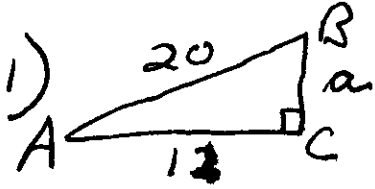


Trig Test 200509070631 Name _____

Solve for the unknown value using either $c^2 = a^2 + b^2$ or $PP_2 = \sqrt{(x_2 - x_1)^2 + (y_2 - y_1)^2}$. Start with the equation then solve in a step by step manner. Circle final answer. Leave answer as square root or whole number.



4) $P_1(-2, 6)$ $P_2(6, 12)$
Find distance P_1P_2

$\sqrt{2} = \underline{\quad}$ $\sqrt{3} = \underline{\quad}$ $\sqrt{5} = \underline{\quad}$ $\sqrt{100} = \underline{\quad}$ $\sqrt{81} = \underline{\quad}$