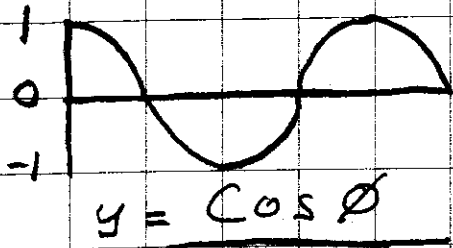


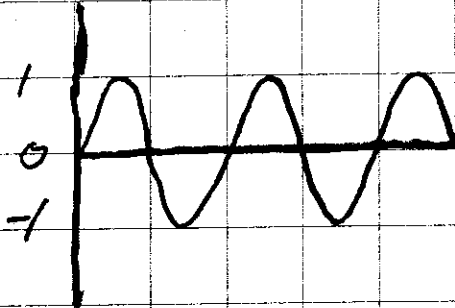
20080310\_0800

Answers

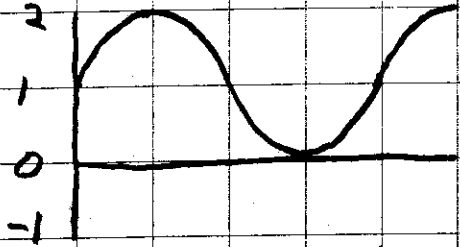
0 90° 180° 270° 360°



$y = \cos \phi$



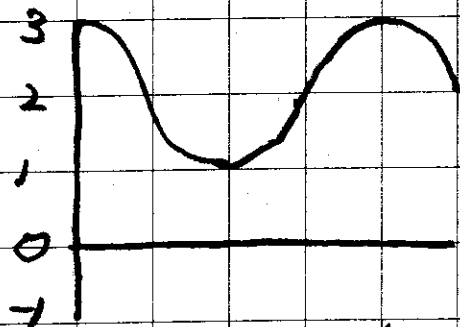
$y = \sin 2\phi$



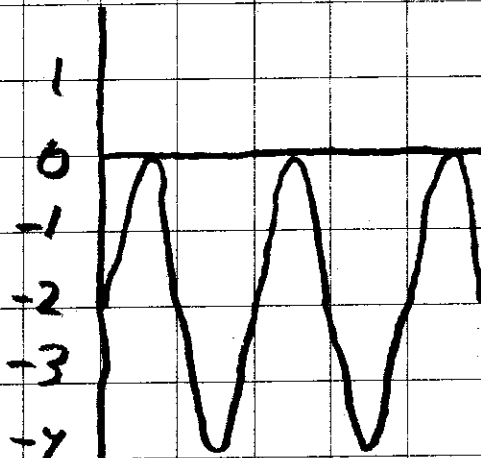
$y = \sin \phi + 1$



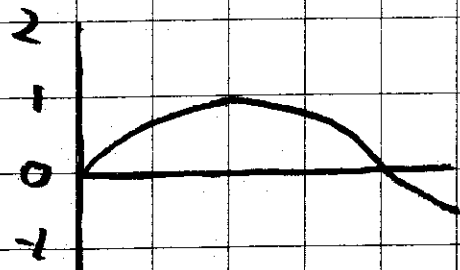
$y = \sin 2\phi + 2$



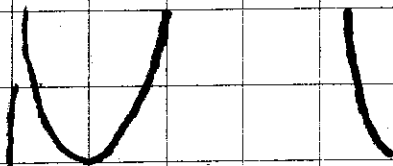
$y = \cos \phi + 1$



$y = 2 \sin 2\phi - 2$



$y = \sin \frac{1}{2} \phi$



$y = \csc \phi$