

20080402-0932

Name _____

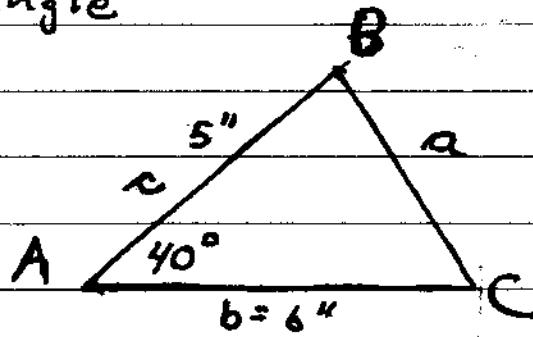
Solve the triangle

Angles

A = _____

B = _____

C = _____



Sides

a = _____

b = _____

c = _____

First determine side a

using:

$$a^2 = b^2 + c^2 - 2bc \cos A$$

Second determine

angle C since C

looks less than 90°

Use

$$\frac{a}{\sin A} = \frac{c}{\sin C}$$

Last determine angle B

using

$$A + B + C = 180^\circ$$